



NAPIER AVENUE LONDON SW6



exceptional style



NAPIER AVENUE LONDON SW6



A truly spectacular semi-detached house offered for sale in Fulham's premier street. The property has been refurbished with exceptional style, and is fully equipped with comfort cooling throughout, and integrated Control 4 audio visual system. There is superb living space on the ground and lower floors, and a luxurious master suite occupying the whole of the first floor.

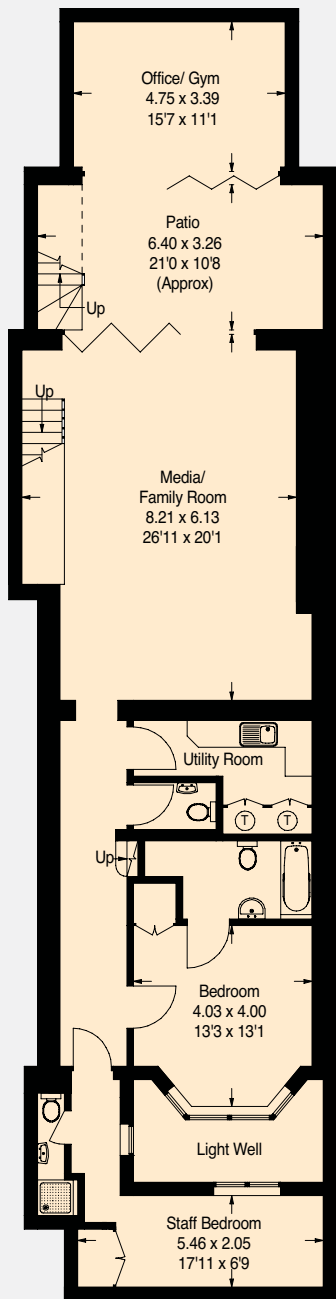
Napier Avenue is without doubt one of the most sought after addresses in Fulham, with the entrance to The Hurlingham Club being at the end of the road. Putney Bridge underground station is also only a short walk away.

#### ACCOMMODATION & AMENITIES

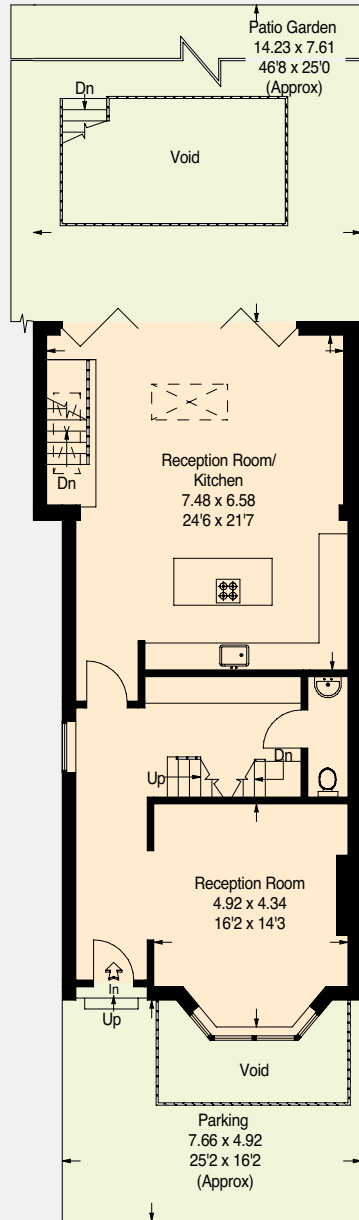
- Prime Fulham location
- 4 Reception Rooms
- 6 Bedrooms
- 5 Bathrooms



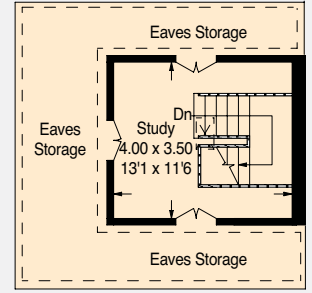
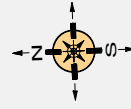
superb living space



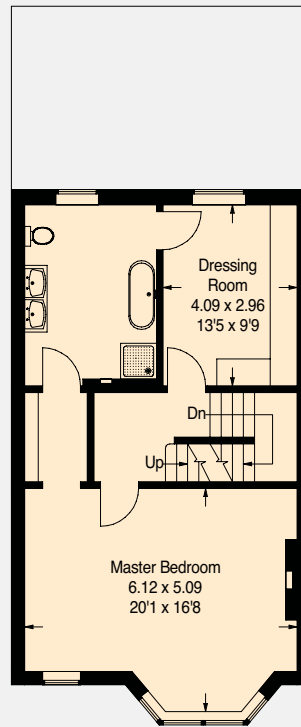
**LOWER GROUND FLOOR**



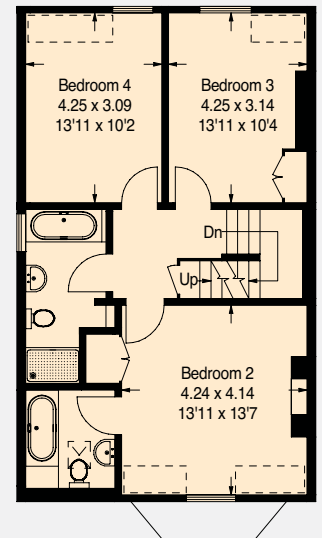
**GROUND FLOOR**



**THIRD FLOOR**



**FIRST FLOOR**



**SECOND FLOOR**

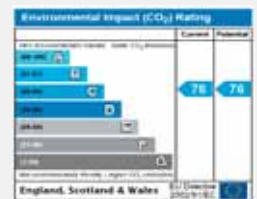
= Reduced headroom below 1.5 m / 5'0"

**APPROXIMATE GROSS INTERNAL AREA**

356 sq m / 3,831 sq ft (Excluding Eaves Storage)

Office /Gym 16 sq m / 172 sq ft

Total 371 sq m / 4,003 sq ft



**Price on Application  
Freehold**

**Hamptons Fulham**

193 New Kings Road, London SW6 4SS  
Sales. 020 7384 1001 fulham@hamptons-int.com  
[www.hamptons.co.uk](http://www.hamptons.co.uk)

For clarification, we wish to inform prospective purchasers that we have prepared these sales particulars as a general guide. We have not carried out a detailed survey, nor tested the services, appliances and specific fittings. Room sizes are approximate and rounded: they are taken between internal wall surfaces and therefore include cupboards/shelves etc. Accordingly, they should not be relied upon for carpets and furnishings. Formal notice is also given that all fixtures and fittings, carpeting, curtains/blinds, and kitchen equipment, whether fitted or not, are deemed removable by the vendor unless specifically itemised within these particulars.

